



# Year 3

## TERM 2 2019

### NEWSLETTER

#### Teachers:

**Scott Bagnall, Kate Thompson, Mel Bufalino, Narelle Lewis, Tegan Layton and Charlotte Young.**

Welcome back to Year 3 in Term 2. We hope you have had an enjoyable and relaxing holiday break. This is another very busy term. Please try and read the school newsletters as they have all the important dates recorded weekly. We would ask that you try and send your child every day this term unless they are ill. Report cards are handed out at the end of term. The children need to be here as much as possible so they can complete the assessments.

Welcome to Miss Tegan Layton. Miss Layton will be working Mondays and Tuesdays alongside Ms Lewis and 3D this term. Ms Lewis will continue Wednesday-Friday. Please come in and make Miss Layton feel welcomed.

#### Daily Routines

8:40- Reading time

8:50 – Writing Time

8:55-10:55 - Morning Session (Literacy)

10:55-11:25 - Morning Tea

11:25-12:55 - Middle Session (Numeracy)

12:55-1:35 – Lunch



#### **Unit Learning Goals Term 2**

**English:** We will be writing a narrative. We will create and present an authentic dialogue of a procedure. We will be reinforcing Comprehension Strategies to understand what we read.

**Maths:** We will study numbers to 9999. We will add and subtract 3 digit numbers using efficient strategies. We will aim for accurate recall of basic number facts. We will solve a variety of problems.

**HaSS :** We will be researching and presenting information on a toy or communication device of the past, into present and predict its future.

**Health:** Students will be studying the Seven Pimpama Values.

**Drama:** We will learn the elements of Drama and act out various scenarios.

#### Days to remember



Mon	<ul style="list-style-type: none"> <li>• Homework and Home Readers sent home</li> <li>• Music</li> <li>• Japanese</li> </ul>
Tues	<ul style="list-style-type: none"> <li>• PE</li> </ul>
Wed	<ul style="list-style-type: none"> <li>• Parade (8:55, parents welcome)</li> <li>• Library borrowing (pack your library bag)</li> <li>• Truck Library</li> </ul>
Thurs	<ul style="list-style-type: none"> <li>• Religion</li> <li>• Science</li> </ul>
Fri	<ul style="list-style-type: none"> <li>• Homework and Home Readers returned</li> <li>• Weekly Spelling and Numeracy tests</li> <li>• Coding/Digital Technologies</li> </ul>

1:35-2:55 - Afternoon Session (other KLA's)

2:55 - Home time (Children waiting for a lift must sit on the grassed area *inside* the school gates until an adult has arrived to collect them.)



## Important Dates Term 2

### April

Monday 22<sup>nd</sup> April - Easter Monday holiday  
Tuesday 23<sup>rd</sup> April - First day of Term 2  
Thursday 25<sup>th</sup> April - Anzac Day Public Holiday

### May

Monday 6<sup>th</sup> May - Labor Day Public Holiday  
Tuesday 14<sup>th</sup> – Year 3 Writing- NAPLAN  
NAPLAN ONLINE - 15<sup>th</sup>-24<sup>th</sup> May  
Wednesday 8<sup>th</sup> May – 3D on parade

### June

Thursday 20<sup>th</sup> June – School Disco  
Thursday 27<sup>th</sup> June – Report Cards emailed  
Friday 28<sup>th</sup> June – Under 8's Day

## NAPLAN:

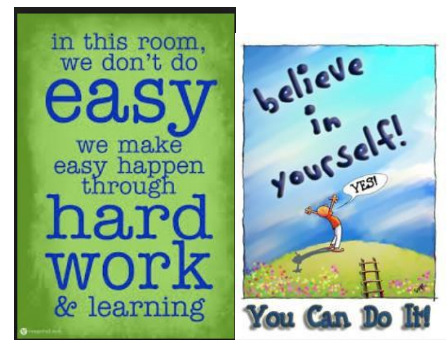
**Week 5 and 6 – Tuesday 14<sup>th</sup> – Friday 24<sup>th</sup> May**

**Tuesday 14<sup>th</sup> May – Writing**

***Language Conventions, Reading and Numeracy are all Online tests in 2019.***



## Homework Term 2



Homework fosters the development of independent study and work habits. It will be issued weekly on Mondays and should be returned on Friday for marking. The homework program is ongoing during the term. It's important that the homework is brought in on a Friday as new homework is added and home readers will be changed on that day. In the first three weeks some practice NAPLAN questions will be included. Please also make note of your child's behaviour record in the front of the homework book.

**Spelling** – Using a list of words relating to the current English unit as well as some personal spelling words. The children use the *Look, Say, Cover, Write and Check strategy*. *In addition, there are some vocabulary challenges that will be included this term. Words vary and are differentiated.*

**Maths** – Revision of the previous week's Maths concepts. Some problem solving questions will be included.

**Reading** – Students are to read to a parent nightly. You are welcome to use your own books if you prefer. Home readers will be distributed on Mondays. Please sign the homework sheet each night.



"Today you are You,  
that is truer than true.  
There is no one alive  
who is Youer than  
You." - Dr. Seuss

"The more that you  
read, the more things  
you will know. The  
more that you learn,



## Communication

Our preferred method of communication is email. We can be contacted on

Scott Bagnall – [sabag0@eq.edu.au](mailto:sabag0@eq.edu.au)

Kate Thompson – [kthom470@eq.edu.au](mailto:kthom470@eq.edu.au)

Mel Bufalino- [mcbuf0@eq.edu.au](mailto:mcbuf0@eq.edu.au)

Charlotte Young– [cxluk0@eq.edu.au](mailto:cxluk0@eq.edu.au)

Narelle Lewis - [nlewi28@eq.edu.au](mailto:nlewi28@eq.edu.au)

Tegan Layton- [txlay0@eq.edu.au](mailto:txlay0@eq.edu.au)

## Behaviour Management and Awards

Students have been receiving class awards and Bronze certificates. Some children will receive their first Silver award this term.

**Student of the Week** – One of the Administration staff will visit the class weekly and present a plaque to a student who has demonstrated the values of Pimpama State School (**Pride, Integrity, Manners, Partnership, Acceptance, Morality, Accountability**).

**SMARTS Award** - Presented at parade on Wednesday mornings.



## Consequences

In line with the School Responsible Behaviour Plan there is a step-by-step procedure for occasions when the class rules are not followed.

1. First Warning - reminder about the relevant rule.
2. Second Warning - reminder about the child's responsibilities and the consequences.
3. Time Out - in the classroom.
4. Buddy Class- in another classroom.
5. Planning Room - parents notified.

**Homework Behaviour Cards** are filled out by your child's teacher each week.

## Online Resources

**MATHLETICS** is one of Australia's most used educational websites. It is the next generation in learning, helping students enjoy maths and improve their results.

<http://www.mathletics.com/mobile>

**ABC Reading Eggs:** Students improve their reading skills by: listening for modelled fluency; reading for practice; recording their reading; checking comprehension with quizzes. Students log in to get books and quizzes assigned by their teacher. [Reading Eggs](#)

**SPELLINGCITY.COM** - This free website has some engaging games and activities to help to spell words and use them in context. Extended spelling lists have been added for this term as well as a list of common spelling errors drawn from previous NAPLAN tests: Go to <http://www.spellingcity.com.nlewi28/> or <https://www.spellingcity.com/users/cxluk0> and select the relevant 'Pimpama SS Year 3.' list.

## Reporting

At the end of this term children will receive their Semester 1 report cards. They will be emailed out on Thursday June 27<sup>th</sup> June. We encourage all of you to stay connected and feel free to approach us if you have any issues or concerns.



Thank you for your valued support.

Kind Regards,

Year 3 Team.



